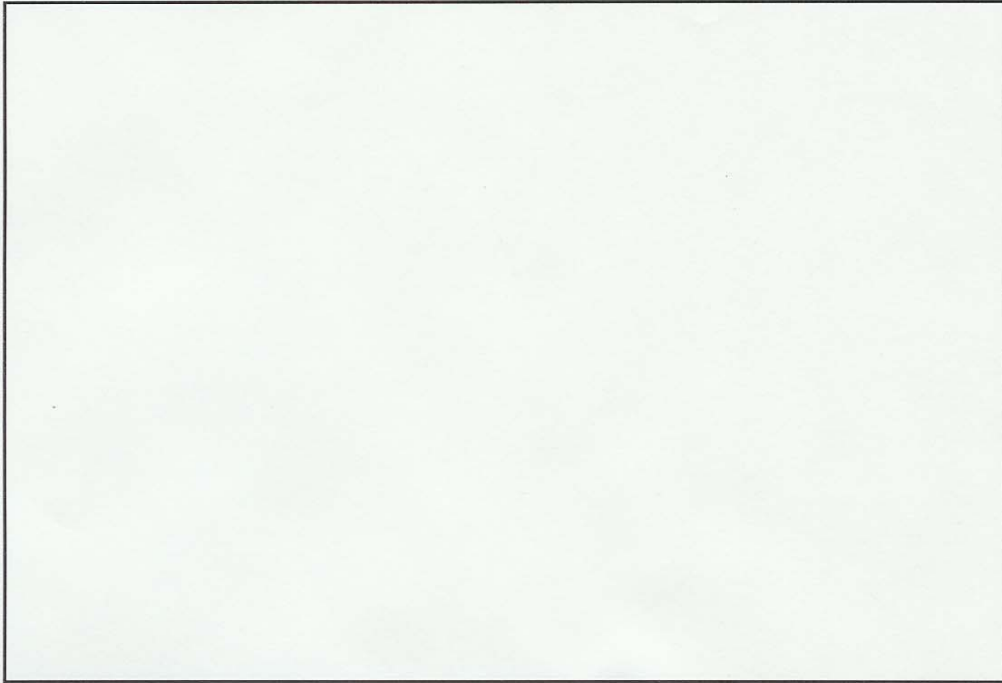


Pechuel-loeschea leubnitziae

Wild sage

Family: Asteraceae (daisy / aster family)



Collection Number: 46

Description: This tall, perennial, grey-green shrub, approximately 2 m. in height, is sometimes thought of as a weed. It is a multi-stemmed shrub which, in late summer and autumn, is covered with many small, daisy-like flowers, which are pale purple to pinky red. The flower heads are typical of the Compositae (daisy) family. They attract many insects. The roots penetrate deeply and the plant may flower in dry times if the roots reach the water table. Bushes can grow up to 2m tall. The grey-green leaves are covered with fine hairs which reduce the rate of transpiration and protect the plant from dehydration. It has a characteristic, overwhelmingly pungent smell, especially noticeable in the late afternoon., and in Afrikaans is known as "Bitterbos".

Habitat: Wild sage usually grows in abundance in sandy areas and disturbed ground. It is very common in the Kalahari, as well as in the pro-Namib, but is only abundant in localised areas on NamibRand. It can be found on farms which have disturbed ground, such as the old gravel pits on Keerweder, and along roadsides, as well as along some dry watercourses.

General information: It is not inheritantly palatable for animals, should livestock browse on the leaves during a drought period, they will not be poisoned, but should cattle eat excessive amounts, it will give the animals diarrhoea. It discolours the milk to a light brown colour and gives it a bitter taste.

WOLWEDANS HERBARIUM (NRNR)

NAME: *Pechuel-Loeschea leubnitziae*

Wild sage

Collection No: 46

Date:

Collector : Louise Clapham

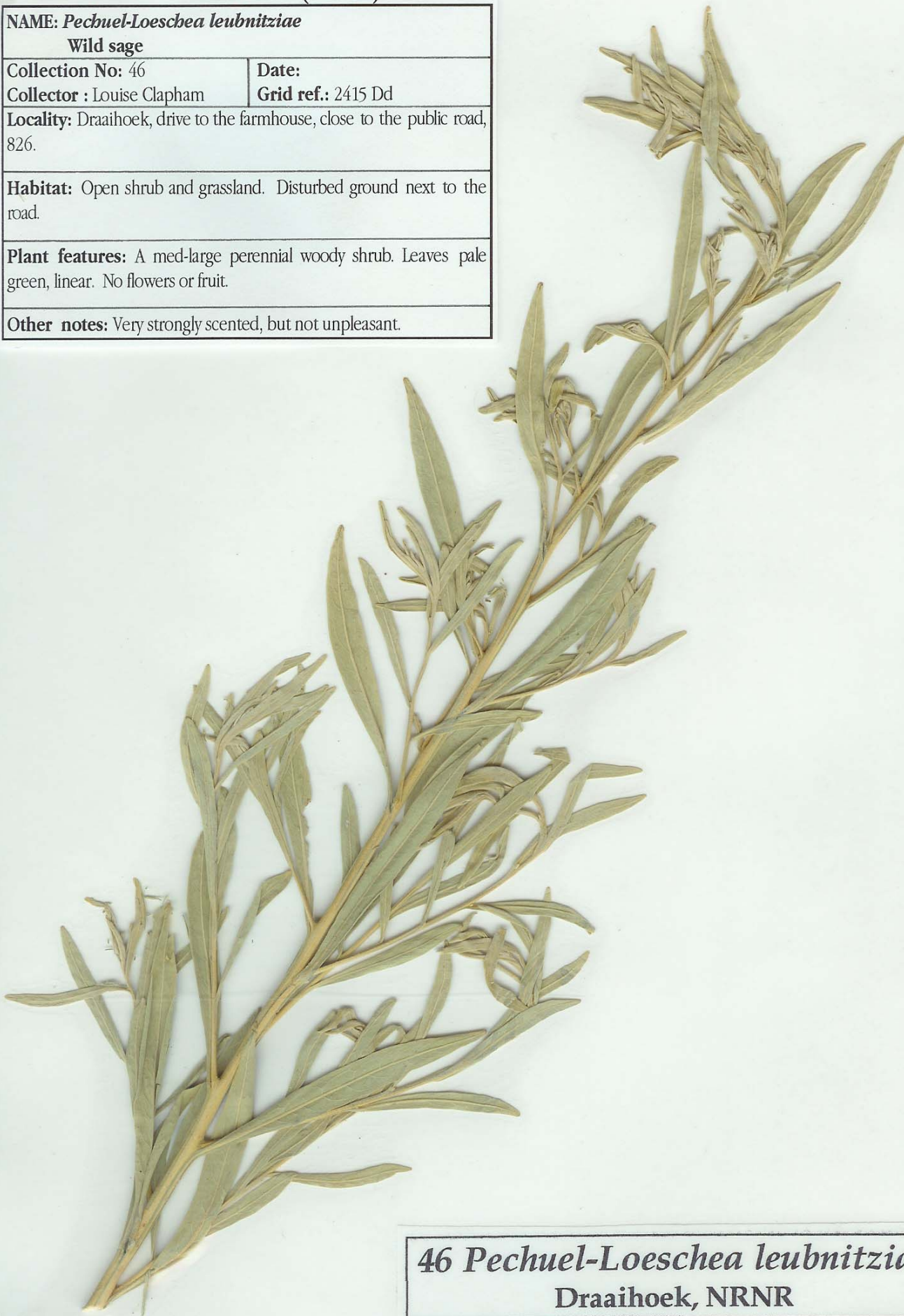
Grid ref.: 2415 Dd

Locality: Draaihoek, drive to the farmhouse, close to the public road, 826.

Habitat: Open shrub and grassland. Disturbed ground next to the road.

Plant features: A med-large perennial woody shrub. Leaves pale green, linear. No flowers or fruit.

Other notes: Very strongly scented, but not unpleasant.



**46 *Pechuel-Loeschea leubnitziae*
Draaihoek, NRNR**