

# *Kissenia capensis*

## Sandpaper bush

---

Family: Loasaceae

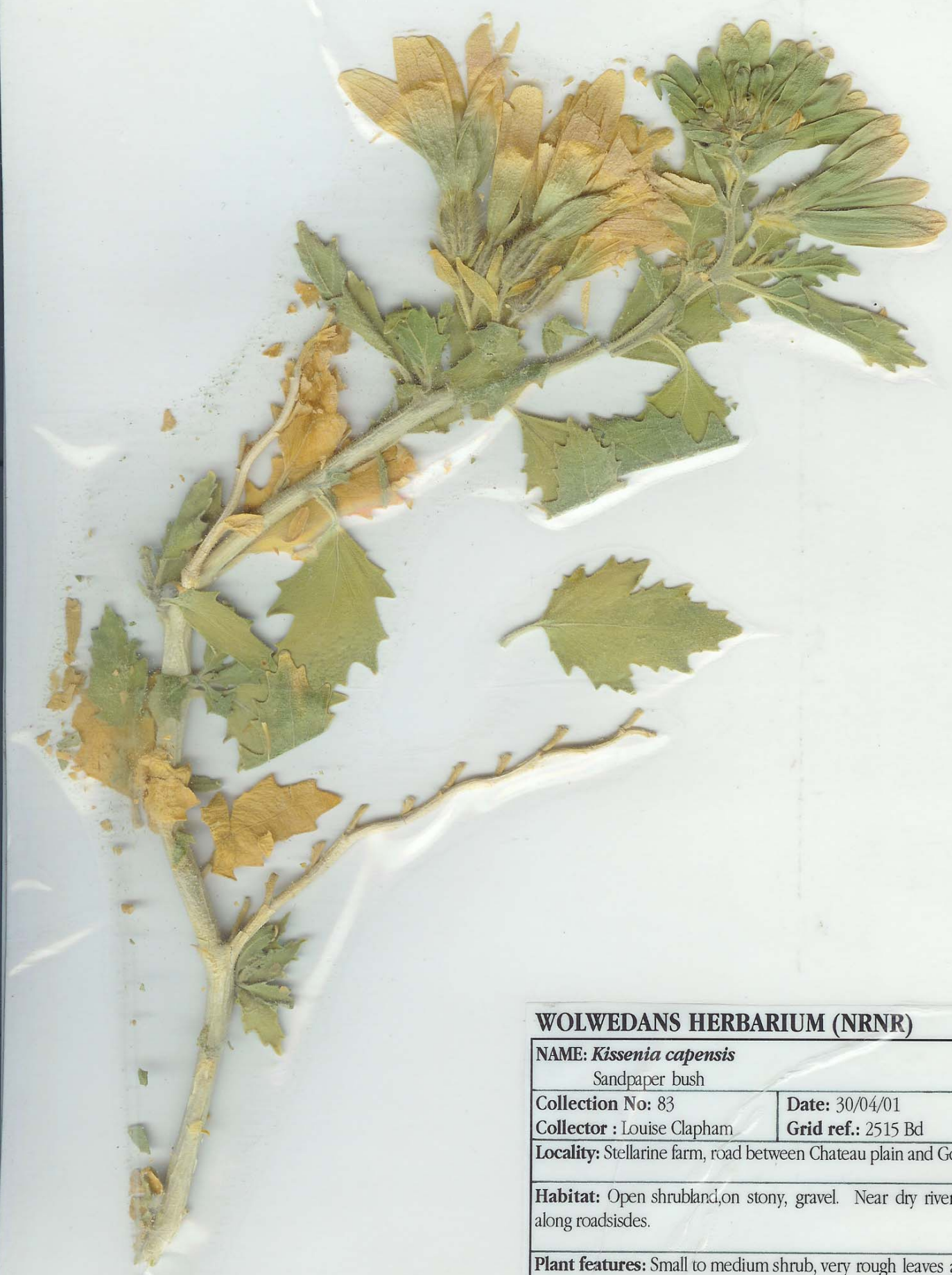


**Collection Number: 83**

**Description:** A medium to small perennial, *Kissenia capensis* is a shrub that should be handled with care at times. It has rough leaves covered in very fine prickles, hence the name "sandpaper bush"; and hairs on the dry flowers that prick like tiny thistles. The attractive flower is made up of an inner whorl of 5 white petals, and an outer whorl of 5 larger, green sepals, which could be mistaken for leaves. The fruit, still in the form of the dried flower, spirals down when thrown upwards.

**Habitat:** This species is found in the north western Cape and the western half of Namibia, where it may be abundant in sandy soils. It is common on NamibRand in the vicinity of dry water courses, and amongst rocks.





**WOLWEDANS HERBARIUM (NRNR)**

**NAME:** *Kissenia capensis*

Sandpaper bush

**Collection No:** 83

**Date:** 30/04/01

**Collector :** Louise Clapham

**Grid ref.:** 2515 Bd

**Locality:** Stellarine farm, road between Chateau plain and Gorrasis.

**Habitat:** Open shrubland, on stony, gravel. Near dry riverbeds and along roadsides.

**Plant features:** Small to medium shrub, very rough leaves and stem. Hair-like prickles on flowers. Flowers white, fruit contained in dry flower.