

# *Adenolobus pechuelii*

## Namib neat's foot

**Family:** Fabaceae  
**Sub-family** Caesalpinioideae

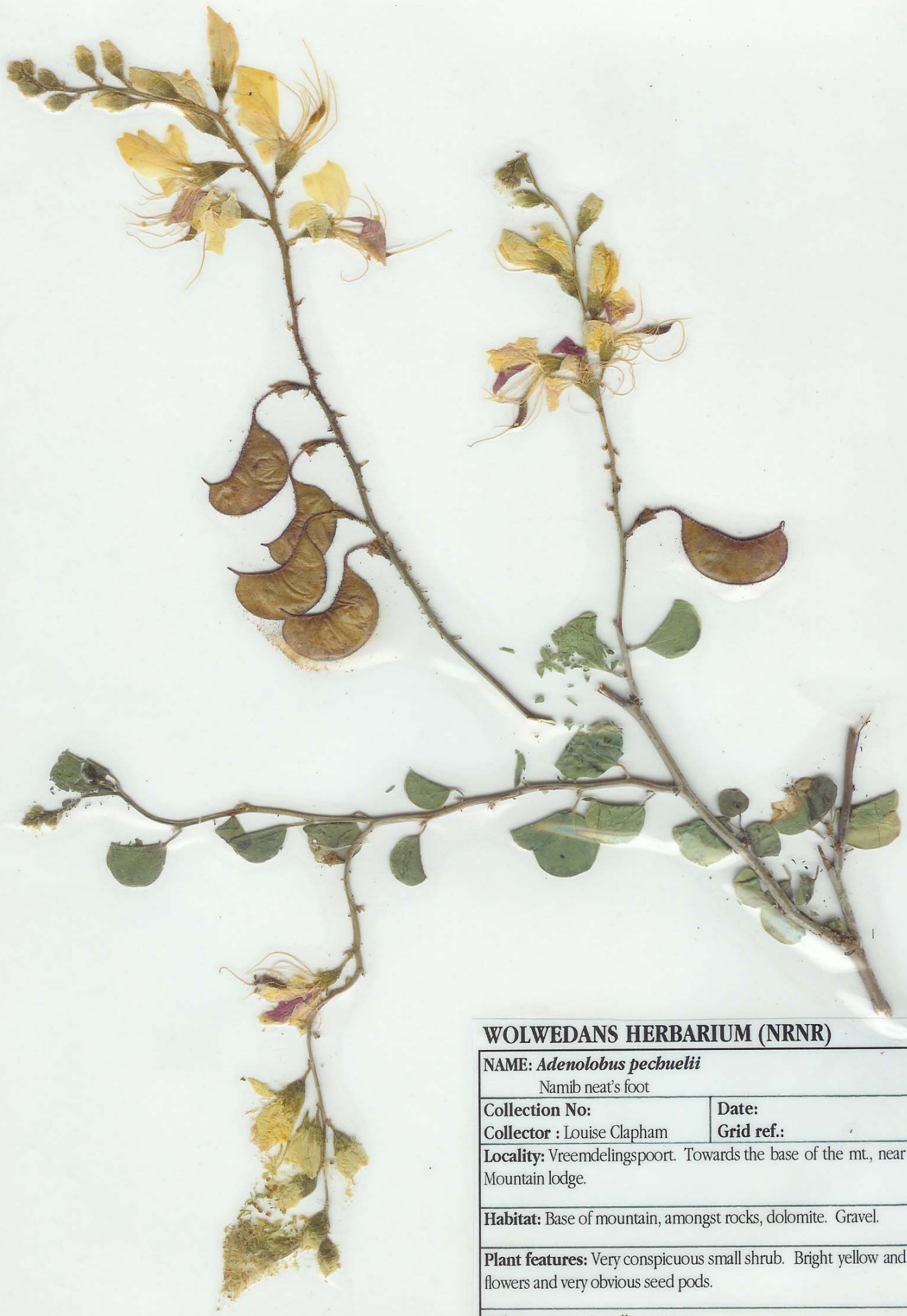


**Collection Number: 82**

**Description:** Usually a small, erect perennial shrub, but its form may sometimes be almost prostrate and spreading. It remains dry and leafless for much of the year, when it is easily overlooked, but once rain has fallen and the plant starts to shoot, the brightly coloured flowers and pods make it unmistakable. The flower has five bright yellow petals, one of which may have red spots. The pods vary in colour from bright red to a yellow or reddish-brown, and usually covered with stalked glands, giving them a speckled, or spotted appearance. New stems may be covered in a pale purple protective layer that may be rubbed off. This substance has a distinctive smell.

**Habitat:** On NamibRand Namib neat's foot is found in the northern mountainous parts of the reserve, on the dolomite hills of Vreemdelingspoort. The plant grows on rocky, stony ground. North of the reserve it grows along the edge of riverbeds and roadsides.

**General information:** The other species within the genus *Adenolobus* which is commonly growing on the reserve, is the tree *Adenolobus garipensis*, the Butterfly Leaf, which has very similar shaped leaves.



**WOLWEDANS HERBARIUM (NRNR)**

**NAME:** *Adenolobus pechuelii*

Namib neat's foot

**Collection No:**

**Date:**

**Collector :** Louise Clapham

**Grid ref.:**

**Locality:** Vreemdelingspoort. Towards the base of the mt., near the Mountain lodge.

**Habitat:** Base of mountain, amongst rocks, dolomite. Gravel.

**Plant features:** Very conspicuous small shrub. Bright yellow and red flowers and very obvious seed pods.

**Other notes:** Locally common